



**23 Taff Terrace, Mountain Ash, CF45 4PG**

**£850 Per Month**

**\*\* Three Bedrooms \*\* Modern Kitchen & Bathroom \*\* Well Presented \*\***

A mid terraced house located in the heart of Abercynon, minutes from local shops, school, local shops and train station.

The well presented accommodation comprises entrance hall, living room, dining room, modern kitchen & bathroom and three bedrooms.

There is a forecourt and garden with rear access.

Viewing advised. Available now.

Entrance Hall

Living Room



Dining Room



Kitchen



Bathroom

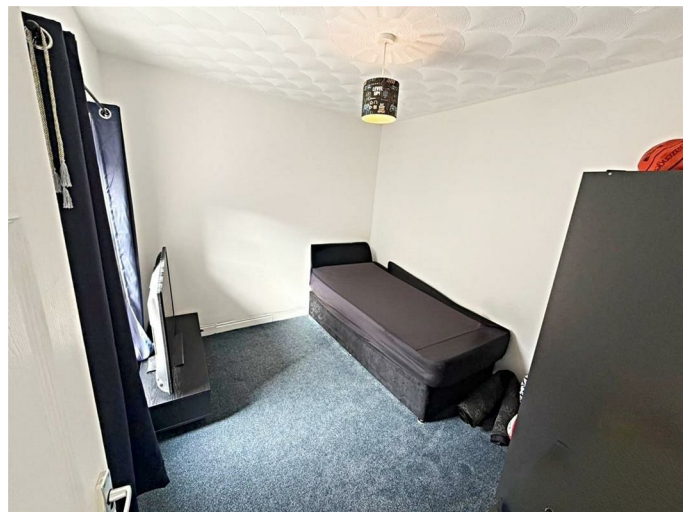


First Floor Landing

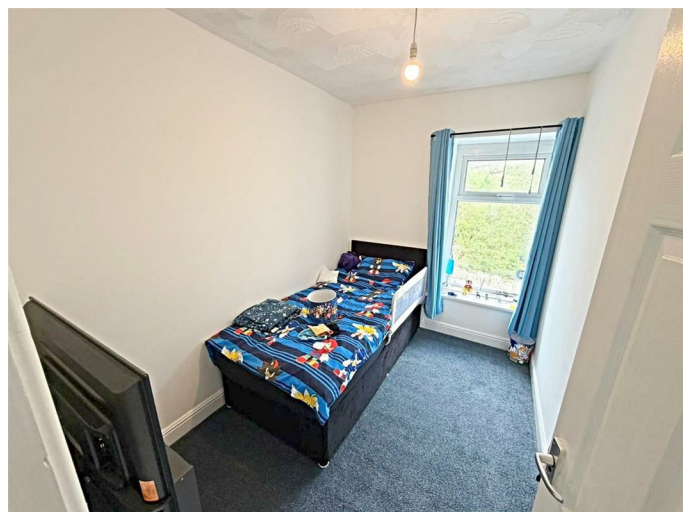
Bedroom 1



Bedroom 2



Bedroom 3

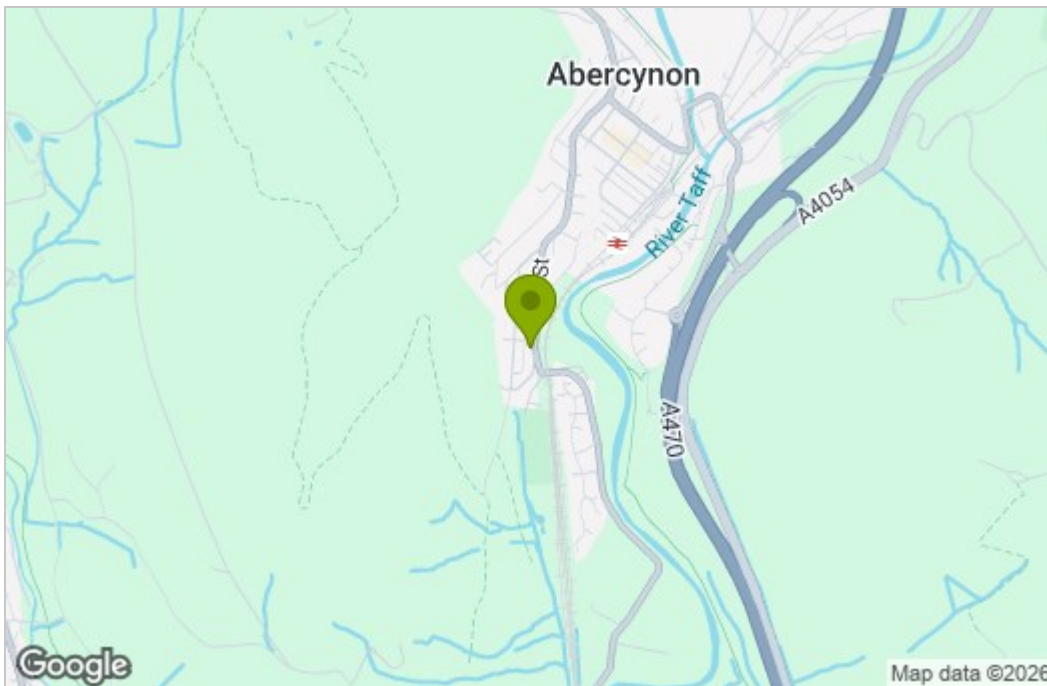


Outside

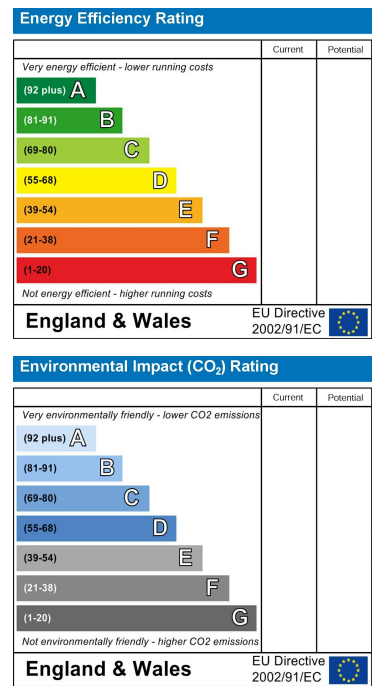


# Floor Plan

## Area Map



## Energy Efficiency Graph



These particulars, whilst believed to be accurate are set out as a general outline only for guidance and do not constitute any part of an offer or contract. Intending purchasers should not rely on them as statements of representation of fact, but must satisfy themselves by inspection or otherwise as to their accuracy. No person in this firm's employment has the authority to make or give any representation or warranty in respect of the property.